



taejinauto.co.kr



Add 경상남도 양산시 동면 가산산단1로 129
#129 Gasansandan 1-ro Dong-myeon
Yangsan-si Kyungnam

TEL +82-55-372-6601~2 **FAX** +82-55-372-6603





TAEJIN
TAEJIN CO., LTD.

**With Trust & Passion
Your Best Partner**

Panel & Block fabrication Line

BLT(Built-up) fabrication Line

Sub-Assembly Line

Etc equipment

Pipe welding equipment



Representatives
of technology & trust

TAEJIN COMPANY

INTRODUCTION

회사소개

(주)태진은 기술과 품질을 최고의 가치로 내세워 국내외 조선소 및 제철소의 용접 자동화 설비, 물류 자동화 설비, 제철 설비, 도장 설비, 기타 조선 기자재류 등 다양한 자동화 설비 제품을 제작, 납품하여 관련 산업 분야 발전에 크게 기여하고 있습니다.

아울러 안전을 회사경영의 최우선 가치로 생각하고 모든 임직원이 한 마음으로 안전한 일터를 조성하는데 최선을 다하고 있으며 여러 분야의 전문가로 구성된 인력과 조직으로 고객에게 최상의 서비스를 제공하기 위해 정성을 기울이고 있습니다.

앞으로 (주)태진은 변화와 혁신을 통하여 모기업의 경영에 도움을 제공하는 본업에 충실함과 동시에 현재 사업과 직간접으로 연관된 사업을 대내외적으로 확대하여 회사의 가치를 제고함은 물론 국가와 지역사회를 위한 기업의 사회적 책무를 다하는 데에도 열과 성을 다할 것을 약속드립니다.

TAEJIN is based on world top class of technology and quality providing welding automation equipment, transportation equipment, steel making equipment, painting equipment and marine equipment to shipyards and steel mills. From engineering to manufacturing and completion of commissioning we are one stop solution provider to our customer and contributing greatly to re related industrial development.

In addition, safety is considered the top priority in company management, and all executives and employees are doing their best to create a safe workplace with one mind, and we are working hard to provide the best service to customers with manpower and organizations composed of experts in various fields.

In the future, Taejin Co., Ltd. promises to be faithful to its main job that helps its parent company manage through change and innovation, while also enhancing the value of the company by expanding its current business directly or indirectly.



TAEJIN COMPANY

HISTORY

걸어온 길

**1997
~1999**

1997. 08. 태진 자동화 설립
Established TAEJIN AUTOMATION

1999. 06. 삼성 중공업(주) 협력업체 등록
Registered vendor to SHI
(Samsung Heavy Industries Co., Ltd.)

**2000
~2009**

2000. 08. 대우 중공업(주) 협력업체 등록
Registered vendor to DSME
(Daewoo Shipbuilding & Marine Engineering Co., Ltd.)

2001. 05. SLS 조선 협력업체 등록
Registered vendor to SLS Shipbuilding Co., Ltd.

2002. 02. POSCO 협력업체 등록
Registered vendor to POSCO

2004. 06. 미주제강 협력업체 등록
Registered vendor to Miju Steel MFG Co., Ltd.

2007. 02. (주)태진 설립
Established TAEJIN Co., Ltd.

2007. 04. SPP 조선 사내 협력업체 등록 (공무지원부)
Registered Sub-contractor to SPP

2007. 05. STX 조선 협력업체 등록
Registered vendor to STX Offshore &
Shipbuilding Co., Ltd.

2008. 02. 성동 조선 협력업체 등록
Registered Sungdong Shipbuilding &
Marine Engineering Co., Ltd.

**2010
~2021**

2010. 04. 두산중공업(주) 협력업체 등록
Registered vendor to
Doosan Heavy Industries Co., Ltd.

2013. 04. 성동조선 사내 협력업체 등록 (공무지원부)
Registered Sub-contractor to SungDong
Shipbuilding & Marien Engineering Co., Ltd.

2016. 04. 현대중공업 협력업체 등록
Registered vendor to
Hyundai heavy industries Co., Ltd.

2018. 03. 삼성중공업(주) 사내 협력업체 등록 (공무지원부)
Registered Sub-contractor to
Samsung heavy industries Co., Ltd.

2020. 05. 현대삼호중공업 협력업체 등록
Registered vendor to
Hyundai Samho heavy industries Co., Ltd.



TAEJIN COMPANY

ORGANIZATION CHART

조직도





TAEJIN COMPANY
PARTNERS

주요 거래업체



TAEJIN COMPANY
CERTIFICATE

인증서



특허증
Certificate of patent



메인비즈
Main-Biz



인증서 ISO 14001
Certificate ISO 14001



인증서 ISO 9001
Certificate ISO 9001

TAEJIN COMPANY CUSTOM-MADE

주문제작



상담
Counseling



기획
Planning



공정과정
Process Process



설비 및 제작
Facilities & Fabrication



납품
Delivery

TAEJIN COMPANY DELIVERY PERFORMANCE

납품 실적

Samsung Heavey Industries Co., Ltd.

- 1997. 03. Control panel for Longitudinal Fit-up Gantry
- 1997. 08. #3 Dock Hydraulic Pusher System
- 1997. 10. Hoist for outfitting shop, Railway Sleepers Plant
- 1998. 02. Railway Sleepers Plant (2 phase)
- 1999. 03. Winch Panel
- 1999. 05. Winch
- 1999. 06. Self Drive
- 2000. 02. Mini Auto Carriage
- 2000. 10. Winch
- 2001. 08. Butt Welding Machine, Built-up
- 2001. 09. 300 ton Block Lifter
- 2002. 01. 60 ton Chain Conveyor
- 2002. 08. Butt Welding Machine
- 2003. 05. Wall Lifter
- 2003. 08. Butt Welding Machine
- 2003. 09. Manipulator (Electrical part)
- 2003. 11. U-RIB Welding Installation
- 2004. 06. Mini Transfer Car (Electrical part)
- 2004. 07. HI-Robot Gantry
- 2004. 08. Combination Machine Remodeling & Rail expansion, Fit-up Machine
- 2004. 10. Co2 Welding Gantry
- 2005. 01. 41BAY HI-Robot
- 2005. 03. 36BAY Butt Welding Equipment
- 2005. 06. 20 Pole Welding Machine, SAW Welding Gantry
- 2005. 12. Revamping for 35/36BAY 40Pole Welding Machine
- 2006. 01. Complement for Marine SAW Gantry
- 2006. 04. Butt Welding Machine
- 2006. 05. Revamping for 35/36BAY 40Pole, Build-up Welding Machine
- 2006. 07. Butt Welding Machine, 32 Pole Stiffener Welding Machine

- 2006. 08. Tandem 6 Pole Welding System
- 2006. 09. 3DK 35/35BAY Gantry remodeling, 3DK Welding Machine
- 2006. 12. FAB JIB Hoist
- 2007. 06. SAW Auto-Welding Machine
- 2008. 10. 3 Dock Butt Welding Machine Traversing system
- 2009. 03. 32 Pole Stiffener Welding Machine Head
- 2009. 04. Build-up Welding System
- 2009. 06. PROPELLER TURN OVER 300TON
- 2009. 09. 14 Pole Stiffener Welding Machine
- 2010. 06. 3 Dock Butt Welding Machine Cable
- 2011. 01. 20 Pole Stiffener Welding Machine
- 2011. 09. Stiffener Fit-up Machine
- 2012. 08. 40 Pole Stiffener Welding Machine Traversing system
- 2012. 08. Build-up Line In-out conveyor

Dongbu Steel

- 2008. 07. | Truss Beam Welding line

Hyundai Heavy Industries Co., Ltd.

- 2020. 08. | Plate Joining Machine Overhaul

STX Offshore & Shipbuilding Co., Ltd.

- 2002. 01. | Roll Conveyor Line & Auto Carriage
- 2008. 09. | SAW Welding Machine

POSCO

- 2007. 11. | BD MILL ROLL CHOCK M/C

(주)태진은 세계적으로 가장 유명한 회사들과 소통을 통해 소비자의 니즈에 맞게 제작 및 설비공정을 하여 납품하고 있습니다.

TAEJIN Co., Ltd. communicates with the world's most famous companies and manufactures and supplies them according to consumers' needs.

Daewoo Shipbuilding & Marine Engineering Co., Ltd.

1997. 03	Robot Welding Gantry
1998. 04	Self Drive System
1999. 02	Winch Panel
2000. 08	Self Drive
2000. 10	Skidding System
2000. 11	Valve Control System
2001. 03	Turning Roll Machine
2001. 06	Sliding Door
2001. 08	300 ton Chain Conveyor, Remote Control
2001. 09	Hoist Crane , Tent House
2002. 06	Gantry for Sub-material
2004. 04	24 Pole Welding Machine (Electric part)
2004. 10	Winch
2005. 08	Transporter Car
2006. 01	Rewinder Rotator for Tuning Machine
2008.	Transport Car
	Auto T-Bar Assembly System
	Sliding Platform
	Retrofit of Up-down Unit & Pusher
	Self Driver, PBS A-2Bay Stage
2014. 08	Longi, Fit-up Machine
2016. 08	32 Pole Welding Machine
2018. 01	T-bar Welding Machine
2019. 08	40Pole Welding Machine
	Slat Chain Conveyor (GBS)
	Conveyor Line (PAS)
	Dandy Robot Gantry Remodel
2020. 08	720Ton Transport Car
2020. 09	Slat Chain Conveyor (3DS)
	Small Component Handling Machine

Sungdong Shipbuilding & Marine Engineering Co., Ltd.

2007. 01	Butt Welding Machine
	32 Pole Welding Machine
2008. 08	Butt Welding Machine, Fit-up Machine, 32Pole Welding Machine, Work piece feeding system
2009. 01	Butt Welding Machine
2011. 07	Preprocessing Line Out-feeding Conveyor
2015. 04	10Ton Pulling Winch
2015. 11	Butt Welding Machine Welding Head
2015. 12	Dry Oven Chain Conveyor

SLS Shipbuilding Co., Ltd.

2002. 08	15 ton Gantry, 35 ton Gantry
2005. 04	30 ton LLC, 60 ton LLC
2008. 07	Crane Rail

JURONG

2013	BRAZIL, Panel Fabrication Line
	SINGAPORE, Panel Fabrication Line

China

2010. 05	Qingdao Yangfan Shipbuilding, Panel Fabrication Line
2010. 09	Rongsheng Heavy Industries, Panel Fabrication Line(4 lines)

Saudi Aramco

2020. 11	Butt Welding Machine
	40pole welding Machine



PANEL & BLOCK AUTOMATION LINE

판넬 & 블록 자동화 라인



PANEL & BLOCK
AUTOMATION LINE



BLT (BUILT-UP)
FABRICATION LINE



SUB-ASSEMBLY
LINE



ETC
EQUIPMENT



PIPE WELDING
EQUIPMENT



Panel & Block Automation Line List

- Plate Joining Machine
- Butt Welding Machine
- Longi. Fit-up Machine
- Longi. Welding Machine
- Welding service Gantry
- Crane Turn over System
- Block Lifter

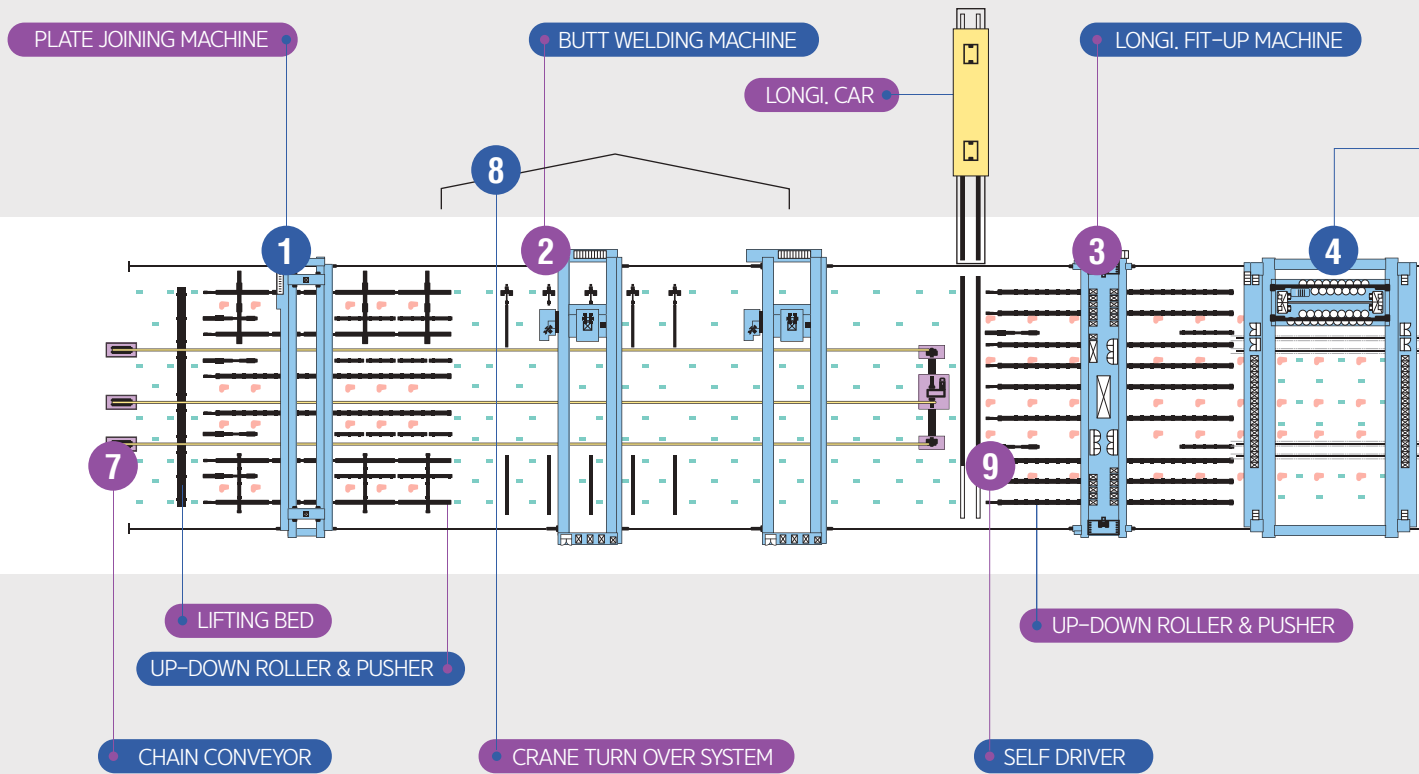


Panel & Block Automation Line

PANEL 및 PANEL BLOCK을 제조하기 위한 라인으로, PANEL BLOCK 제조는 선박 선체 구조의 60%를 차지하므로 높은 생산성 및 품질이 보증되어야 한다. 이를 위해 WORK PIECE의 FEEDING 및 FIT-UP, WELDING SYSTEM 등 각 작업 단계에 적합한 자동화 장비를 갖추고 있으며, 이러한 생산 시스템을 통해 적은 비용과 노동력만으로 조선소의 생산량을 증대시키고, 생산속도를 향상시킬 수 있다.

This workshop is purposed to fabricate panel & panel block. As this panel block fabrication is charging 60% of hull structure of ship, the productivity of this shop should be high performed and quality assured. To archive it, each work stage have proper automatic equipments for feeding system of work piece, fit-up, welding and etc. With this production system shipyard will have increased production speed & capacity with low cost and labor.

PANEL & BLOCK AUTOMATION LINE



Panel & Block Automation Line Machine



1 PLATE JOINING MACHINE



2 BUTT WELDING MACHINE



3 LONGI. FIT-UP MACHINE



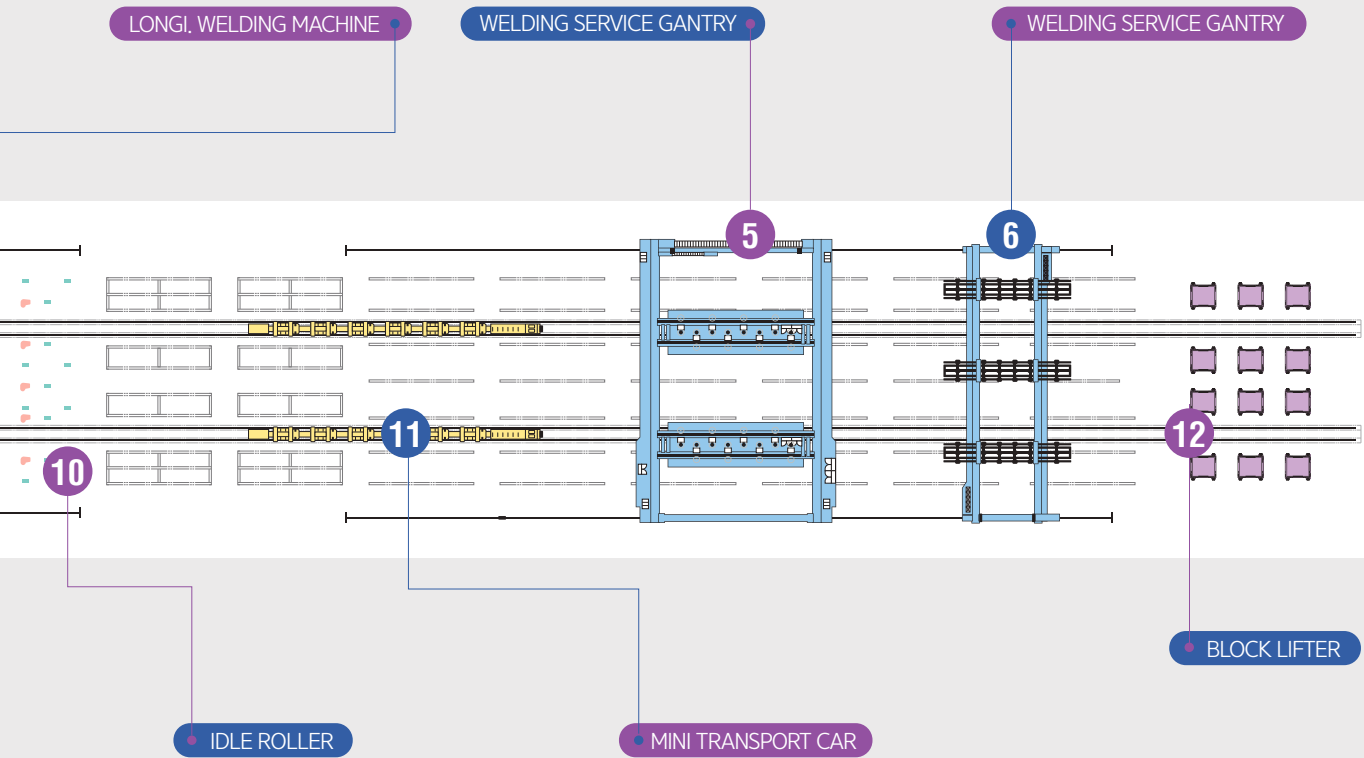
7 CHAIN CONVEYOR



8 CRANE TURN OVER SYSTEM



9 SELF DRIVER



4 LONGI. WELDING MACHINE



5 WELDING SERVICE GANTRY



6 WELDING SERVICE GANTRY



10 IDLE ROLLER



11 MINI TRANSPORT CAR



12 BLOCK LIFTER



Panel & Block Automation Line
LIFTING BED

JOINING MACHINE과 함께 주판의 LEVEL 조절한다.
Cooperate with joining machine to control level of main plates.





Panel & Block Automation Line

CHAIN CONVEYOR

CHAIN을 이용하여 주판을 밀어 다음 작업 공정으로 이송한다.
Put DOG into chain then drive to push plates.

Panel & Block Automation Line
**UP-DOWN
ROLLER**

HYD' SYSTEM이 장착된 ROLLER를 이용하여 WORKING TABLE에 놓인 주판을 상승 및 하강시키는 장치이다.
JOINING STAGE, LONGI, FIT-UP STAGE의 하부에 설치된다.

This device is used to up & down of panel which are located on working table by hydraulic system equipped roller.
It is installed at floor of plate joining stage & longi. fit-up stage.





Panel & Block Automation Line

PUSHER & STOPPER

STAGE의 측면과 종방향으로 설치하여 주판을 정렬한다.

Installed at side and longitudinal of stage for arranging main plate.





Panel & Block Automation Line

PLATE JOINING MACHINE

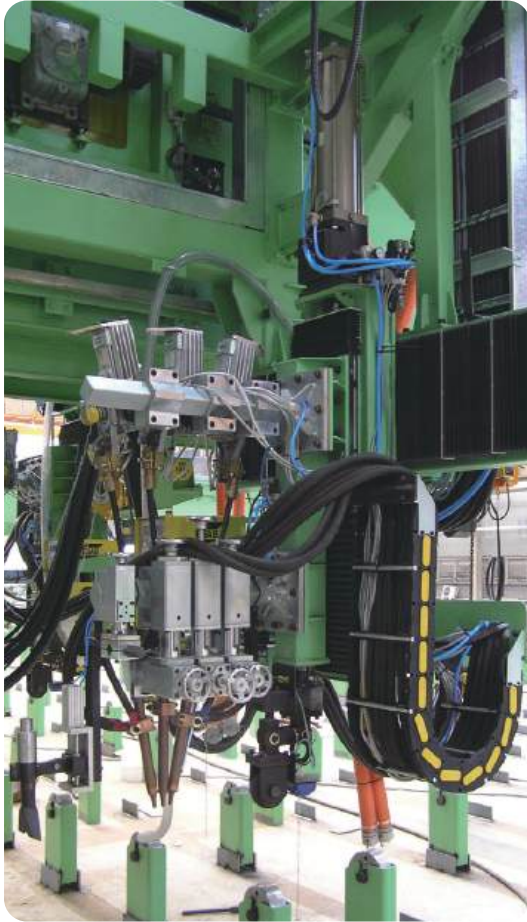
본 장비는 PANEL LINE의 판계 STAGE 에서 주판의 판계용접 을 하기 전에 주판을 취부하기 위한 장비이며, MAGNET CRANE에 의해 LOADING된 PLATE를 조정, SETTING 하며, 하부의 PLATE 조정용 PUSHER, MAGNET POSITIONER, LIFTING BEAM 등 별도의 장치와 연결하여 PLATE의 취부를 신속하며 정확히 행하여 보다 효율적이며 생산성 향상을 도모 하기 위한 장비이다.

Welding Process

Manual Welding : GMAW 1 Pole - 2 Head = 2 Pole

This equipment is used to control plate alignment for plate joining. Plates is providing by workshop cranes and this equipment adjust and setting for proper position with Side pusher, up-down bed and magnet positioner, etc. One operator can produce plate joining process including tack welding. It save much operation time and increase production efficiency.





Panel & Block Automation Line

BUTT WELDING MACHINE

본 장비는 JOINING MACHINE에 의해 TACK WELDING 된 주판을 용접하기 위한 것이다. 단일 또는 이중 GIRDER 구조와 WELDING CARRIAGE로 구성된 GANTRY TYPE의 장비로써, 주판의 1-SEAM 또는 2-SEAM을 동시에 용접하여 공정간 작업손실 시간을 최소화하여 생산성을 극대화 할수 있는 자동화 장비이다.

This equipment is automated SAW welding machine for panel fabrication. Equipment structure is gantry type and it could perform 1 welding seam or 2 welding seam simultaneously. Automated control and 2 welding seam in 1 pass shall reduce operation loss time and increase productivity. In addition welding head can turn 90 degree so it can weld cross seam welding as well.

Welding Process

Manual Welding : SAW 1 Pole - 2 Head = 2 Pole

Electrode Composition : 2 Pole-2 Head(DC+AC) or
2 Pole-1 Head





Panel & Block Automation Line

LONGI. FIT-UP MACHINE

본 장비는 MARKING된 LINE을 따라 주판 위에 LONGI. STIFFENER를 취부 및 TACK WELDING한다. PLATE와 MARKING LINE이 일치하지 않을 경우 SKEW 장치를 이용하여 정확하게 정렬할 수 있으며, MAGNET를 이용하여 STIFFENER를 고정하고, HYDRAURIC CYLINDER로 가압한 후 TORCH BOOM에 의해 용접한다.

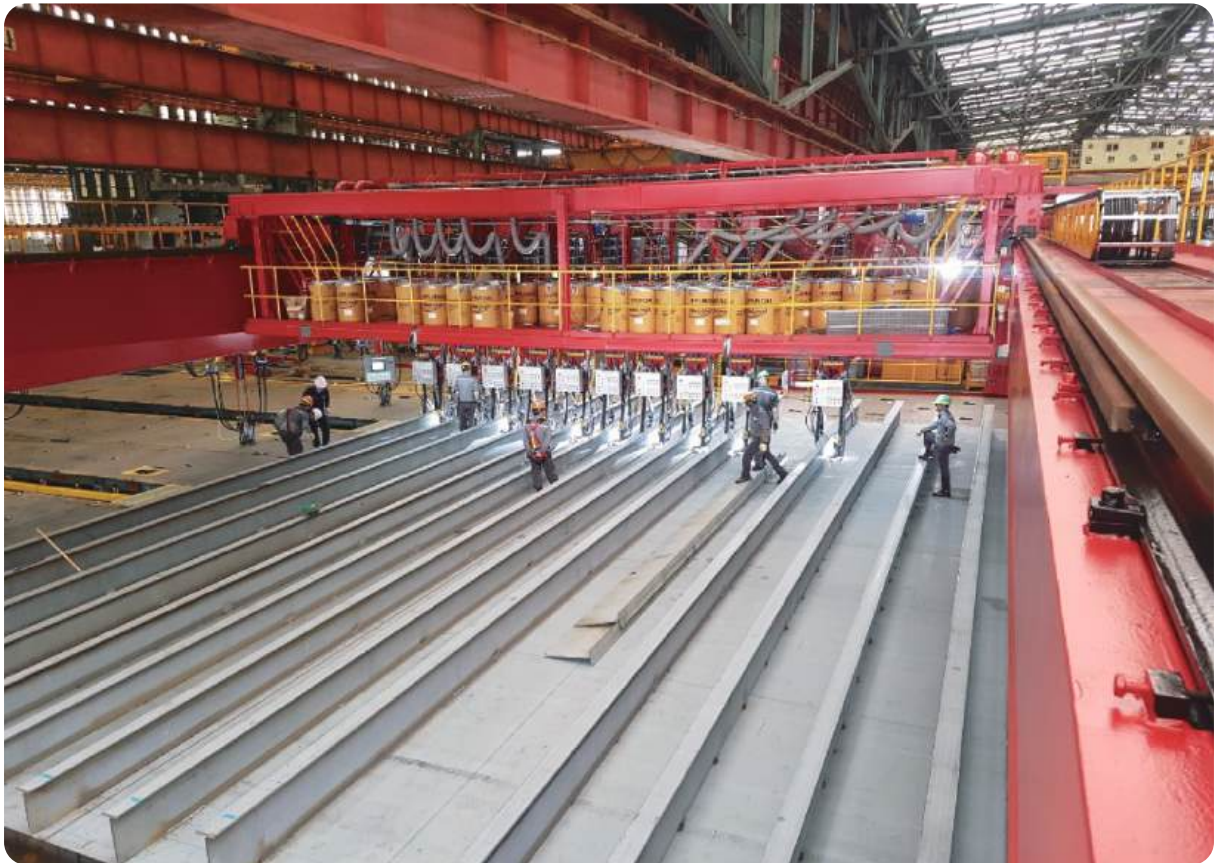
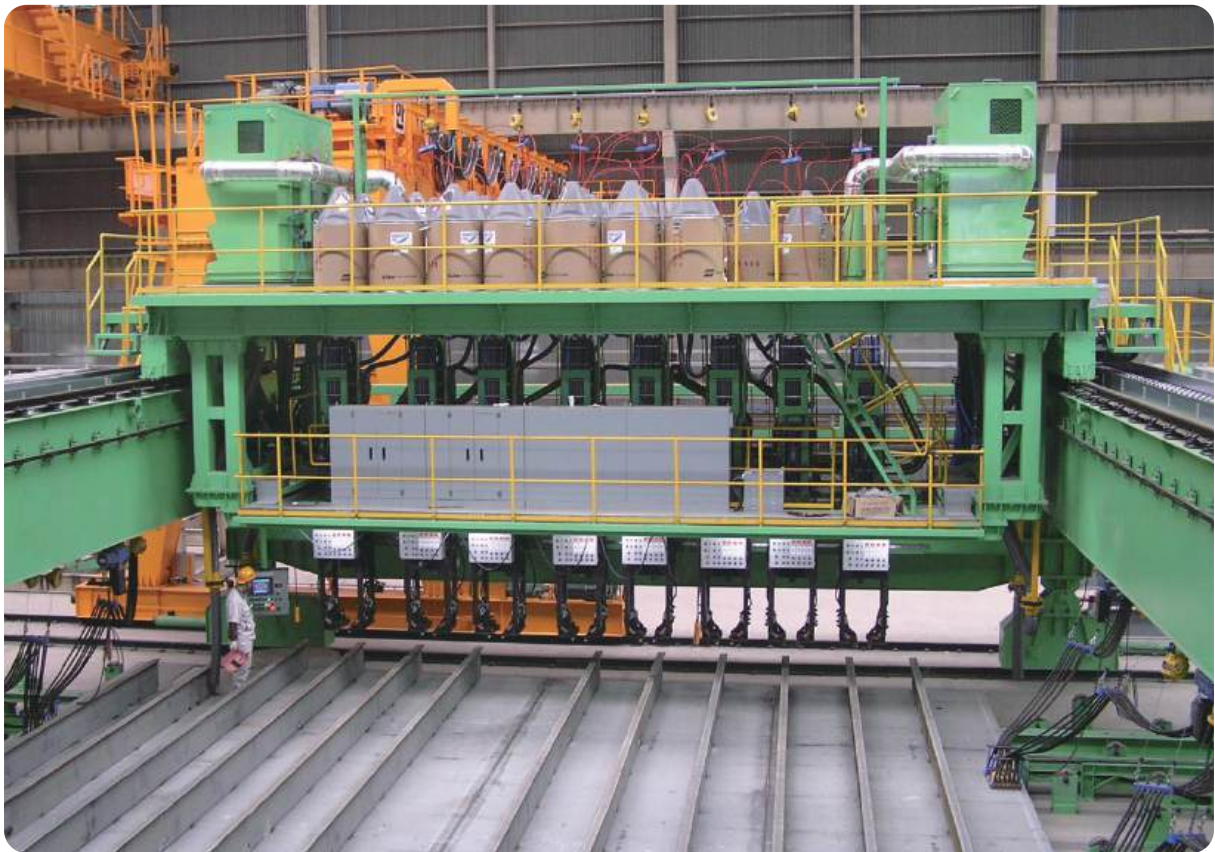
Welding Process

Manual Welding : GAMW 1 Pole - (24) Head = (24) Pole
Electrode Composition : 1 Pole

This equipment is handling Longi. Stiffener along with marked line on panel for fit-up and automatic tack welding with multipole welding torches. It has SKEW function to align Longi. Stiffener and marking line. Pressure cylinder shall press Longi. Stiffener and welding torch boom shall down for tack welding.









Panel & Block Automation Line

LONGI. WELDING MACHINE

본 장비는 주판에 FIT-UP 완료된 STIFFENER를 자동 용접하기 위한 장비로써, MULTI-HEAD 구성으로 동시 용접이 가능하므로 작업의 용이성, 생산성 향상, 작업환경 개선 등을 도모할 수 있다. WELDING HEAD의 구성은 요구에 따라 조정이 가능하다.

Welding Process

Manual Welding : GMAW 4 Pole - (8) Head = (32) Pole
Electrode Composition : 4 Pole

This is multipole welding equipment for Longi. Stiffener. Multi-head shall carry out welding simultaneously for number of stiffeners with twin-tandem method which shall archive high welding speed. It shall provide easy operation, high productivity, clean work environment, etc. Welding head composition is adjustable depending on user's requirements.



Panel & Block Automation Line

WELDING SERVICE GANTRY

본 장비는 PANEL LINE의 작업공정 중 취부가 완료된 부재에 본 용접을 하기 위한 장비이며, 내부재 용접시 작업자가 HANDLING 하는데 불편함과 LOSS TIME을 감소시켜 생산 능력을 향상시킨다. 각 개별 PENDANT SWITCH에 의한 작동방식으로 작업자가 필요한 용접기 및 UTILITY 등을 지원받을 수 있도록 고려된 장비이다.

This equipment is used for inner member welding job of block assembly process. Operator shall have easy operation of welding equipment and necessary utilities. It reduce many loss time and equipment handling time so it crease productivity. It is operated by each pendant switch so operator can select any welding equipment nearby him.

Panel & Block Automation Line

TURN OVER SYSTEM

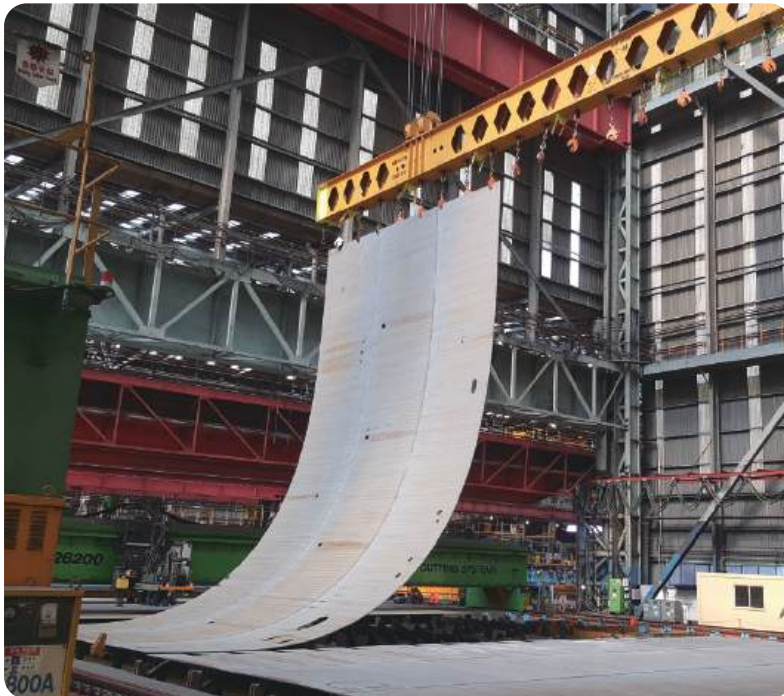
본 장비는 전면 BUTT WELDING STAGE에서 용접작업을 마친 주판을 후면 용접을 하기 위해 TURN OVER 하는 장비이다.

This equipment is hydraulic turn over equipment for back side welding of panel fabrication.

Crane Turnover System

Component : Crane Lifting Beam Clamp/Stopper

Driving Method : Over Head Crane



Panel & Block Automation Line

PULLING WINCH

주판의 WEB PLATE를 WIRE로 당겨 정위치 시키는 장비이다. 와이어가 드럼에 나란히 정렬되어 감겨 운전이 원활하도록 설계되며, 크기 및 중심이 안정된 구조이므로, 다양한 방법으로 쉽게 설치가 가능하다.

This equipment is used to place WEB plate on panel by pulling with wire. It is designed for easy winding by wire shall wind in row, Equipment size and COG is stable so it could be applicable in various area.





Panel & Block Automation Line

MINI TRANSPORT CAR

본 장비는 생산 흐름에 따라 BLOCK을 각 STAGE별로 이송하는 장비로, WORKING TABLE 아래에 설치되며, 리모컨으로 제어한다.

It transfers block from stage to stage according to production flow. This equipment shall be installed under the fixed working table, controlled by remote controller.

Welding Process

Manual Welding : GMAW 4 Pole - (8) Head = (32) Pole
Electrode Composition : 4 Pole

Panel & Block Automation Line

BLOCK LIFTER

본 장비는 용접이 완료된 Block을 반출하는 장치로써 Panel Line의 출구 쪽에 설치된다. Block을 상승시킨 후 Transport Car가 진입하면 Block을 하강시켜 Transport Car에 탑재하는 역할을 한다.

This equipment is used to load out completed flat block from workshop and installed on the end of panel line. It lift up block for loading on transport car.



Panel & Block Automation Line

ROLLERS

1 SELF DRIVER

주판을 이동시키는 장비로 CHAIN CONVEYOR나 대차 등 다른 이송장비가 없는 구간에 설치한다.

It is a device that moves the main plate and is installed in the section where there is no other transport equipment such as a chain conveyor or a bogie.



2 IDLE ROLLER

동력이 있는 다른 이송장비와 함께 설치되어 주판의 이동을 이동시키는 장치이다.

It is a device to move the main plate, installed together with other transport equipment with power.



3 SWIVEL ROLLER

주판의 흐름이 원활하도록 다른 이송장비와 함께 설치되며, ROLLER가 회전형으로 방향의 전환이 가능하다.

It is installed together with other conveying equipment to facilitate the flow of the main plate, and the rotational roller can change the direction.





BLT (BUILT-UP) FABRICATION LINE

BLT 제조 라인



PANEL & BLOCK
AUTOMATION LINE



BLT (BUILT-UP)
FABRICATION LINE



SUB-ASSEMBLY
LINE



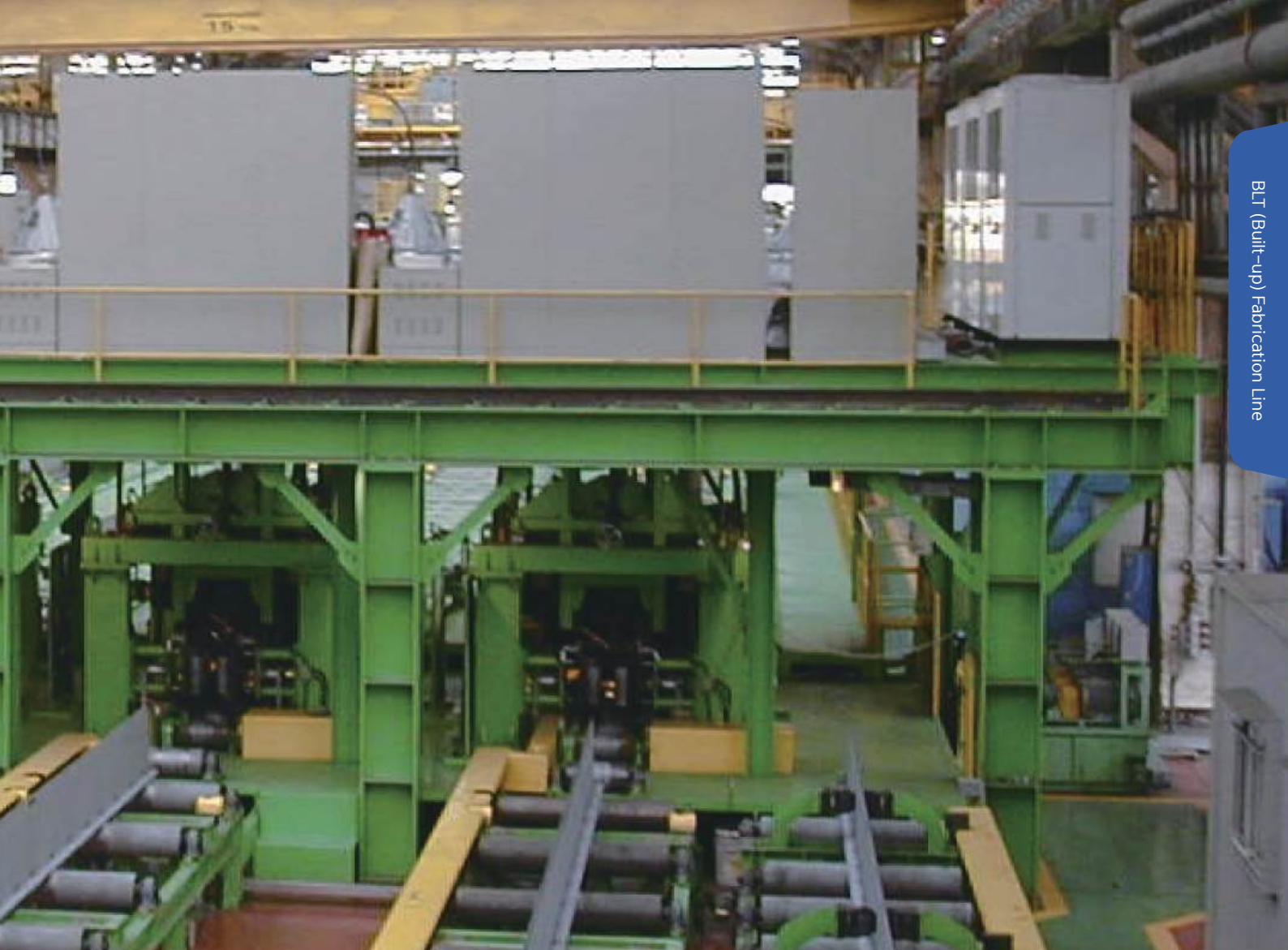
ETC
EQUIPMENT



PIPE WELDING
EQUIPMENT

BLT (Built-up) Fabrication Line List

- Sub-Material Handling crane
- In feeding conveyor
- Fit-up Machine
- Face corner rounding machine
- Welding machine
- Straightening machine

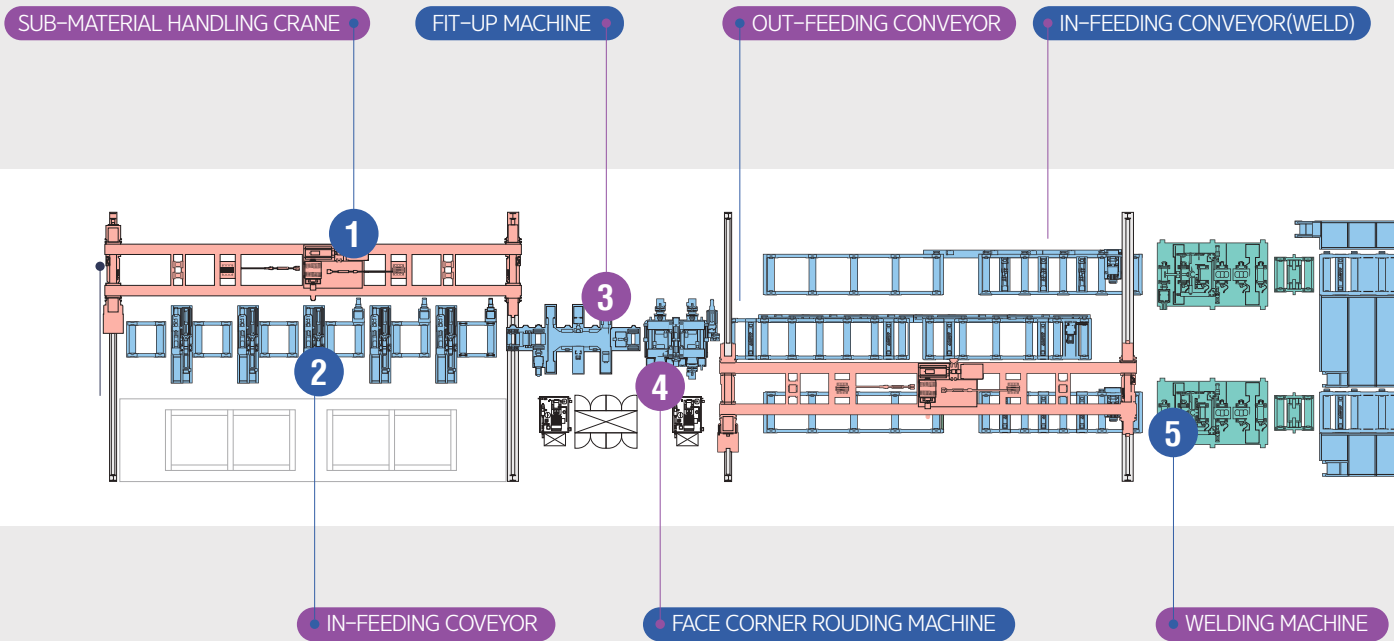


BLT (Built-up) Fabrication Line

본 설비는 조선 선체 BLOCK의 보강재인 STIFFENER (T-BAR , L2-BAR)를 자동 생산하는 설비이며, 부재 공급, 취부, 용접, 교정, SHOT BLASTING 및 PAINT 그리고 적재까지 전 공정이 자동으로 이루어진다.

This is automated production line for reinforcement member, Stiffener (T-bar , L2-bar). From material supply, fit-up, welding, straightening, shot blasting and painting shall be completed automatically in this line.

BLT (BUILT-UP) FABRICATION LINE



BLT (Built-up) Fabrication Line Machine



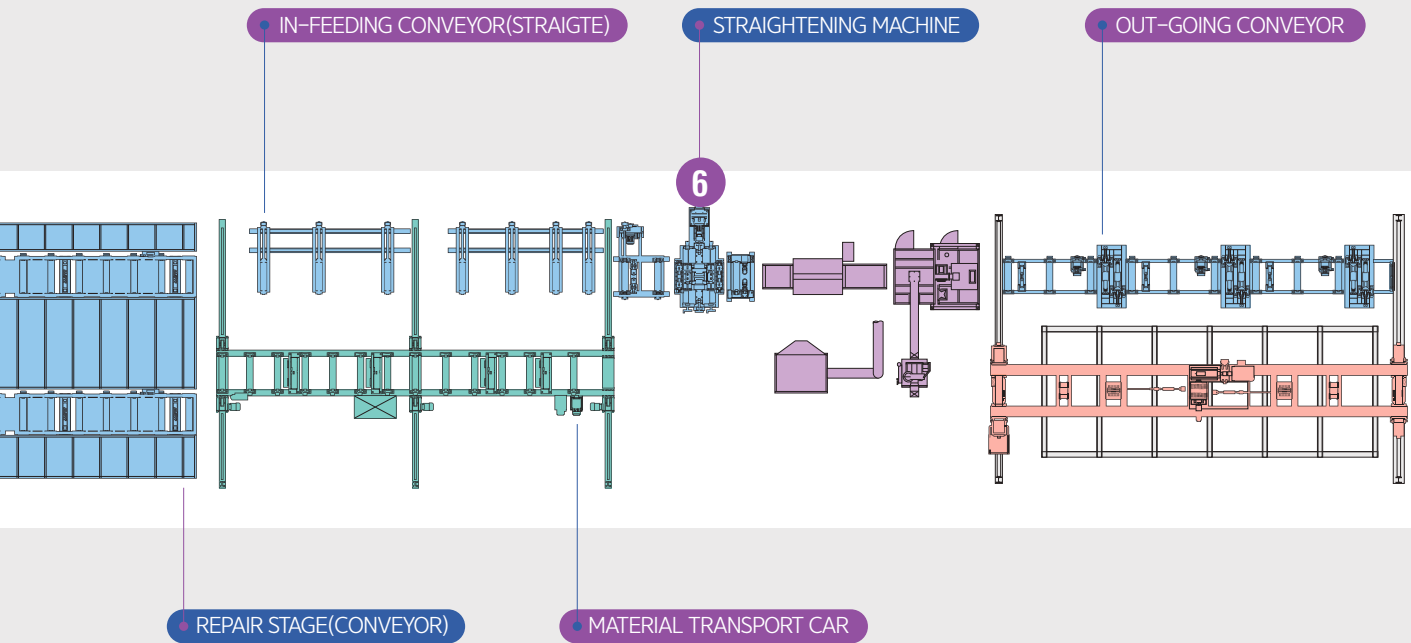
1 SUB-MATERIAL HANDLING CRANE



2 IN FEEDING CONVEYOR



3 FIT-UP MACHINE



4 FACE CORNER ROUNDING MACHINE



5 WELDING MACHINE



6 STRAIGHTENING MACHINE

BLT (Built-up) FABRICATION LINE

SUB-MATERIAL HANDLING CRANE

본 장비는 Web Plate와 face Plate를 적재 테이블에서 생산 라인의 Conveyor로 들어올려 이송시킨다.

This equipment handle web plate and face plate to feed it to production line. In feeding conveyor shall receive it and deliver to next equipment.





BLT (Built-up) FABRICATION LINE

**IN FEEDING
CONVEYOR**

본 장비는 WEB PLATE와 FACE PLATE를 TACK WELDING 하기 위해 정렬 및 이송하는 장비이다.

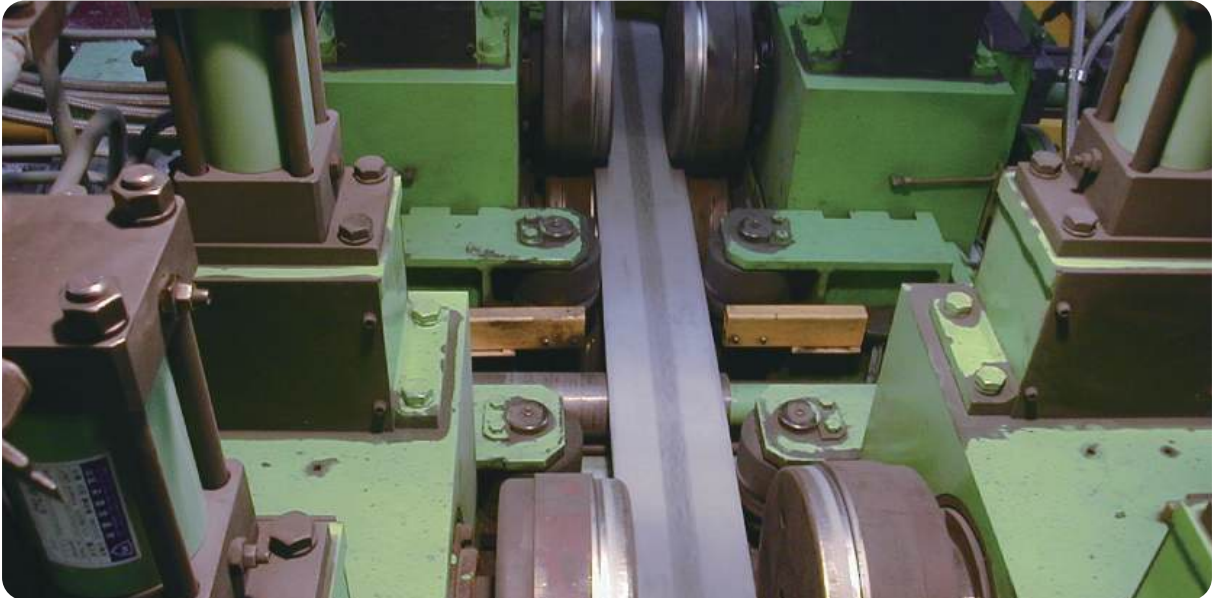
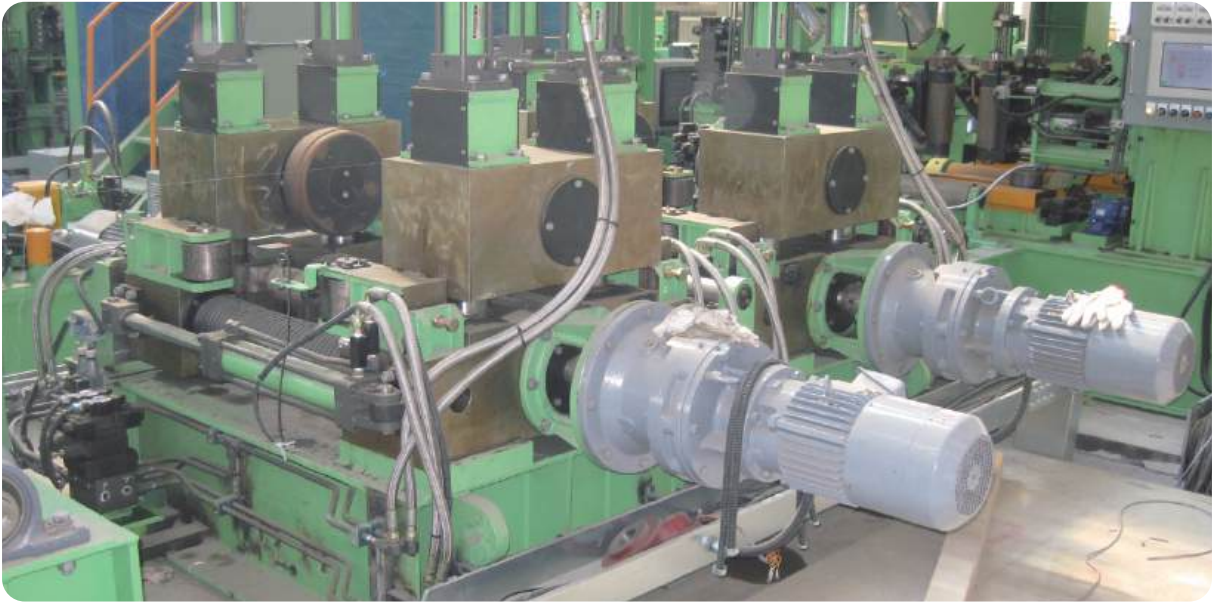
This equipment shall forming for stiffener and array for fit-up process and deliver to next stage.

BLT (Built-up) FABRICATION LINE
**FIT-UP
MACHINE**

이 장비는 T-bar 제작을 위해 Tack-Weld하는 장비이다.
4개의 Welding Torch와 Web Plate를 세우기 위한 Roller와 Web Plate와
Face Plate의 간격을 제거하기 위한 Roller로 구성되어 있다.

This equipment shall perform tack welding for T-bar and it is
composed with 4 welding torches, guide rollers, and pressing
roller to reduce welding gap.





BLT (Built-up) FABRICATION LINE

FACE CORNER ROUNDING MACHINE

이 장비는 T-BAR의 FACE PLATE 모서리를 ROUNDING 하는 장비로, 총 8개의 FACING ROLLER를 이용하여 WEB PLATE의 네 모서리를 ROUNDING 한다.

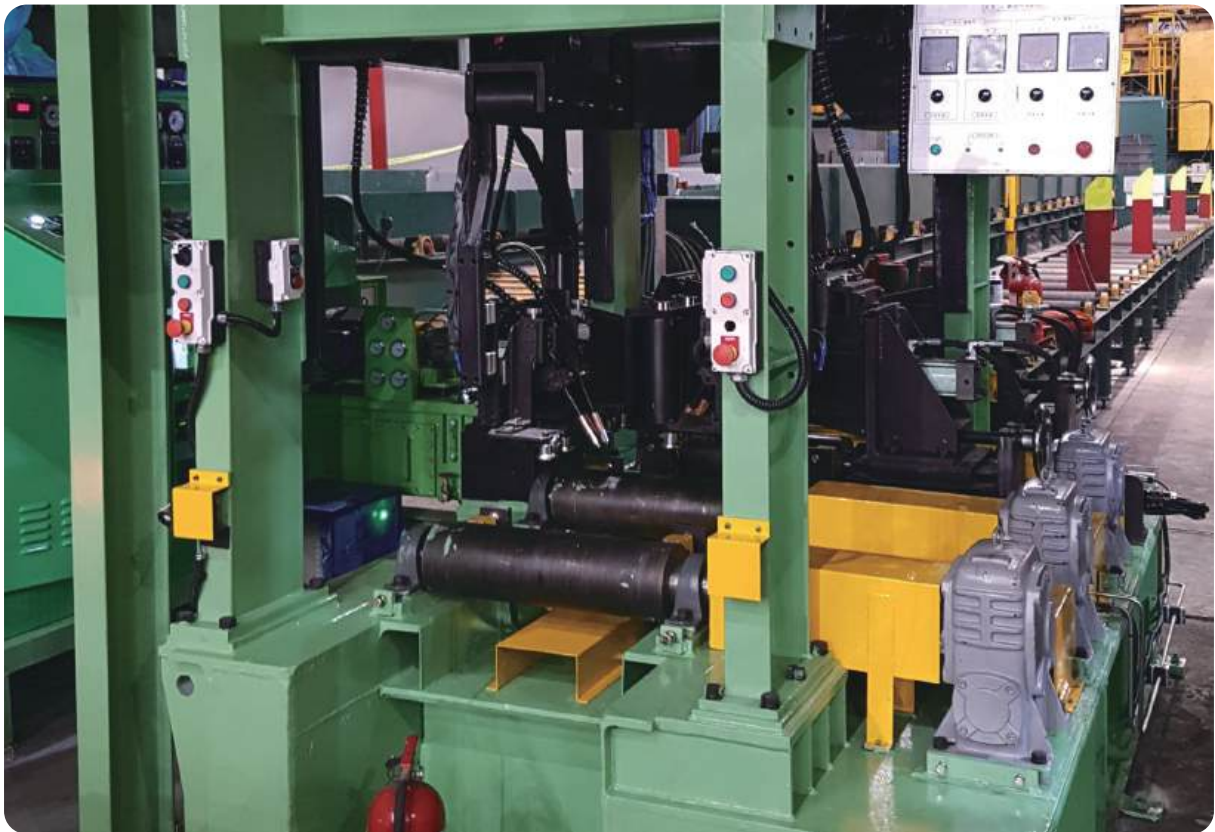
This equipment is corner rounding machine for Face plate. 8 facing roller shall press 4 corner of plate to make smooth rounding.

BLT (Built-up) FABRICATION LINE

WELDING MACHINE

본 장비는 Tack-welding 된 T-bar를 용접하는 장비이다.
측면에 각 2개의 Torch(Twin Tandem), 총 4개의 Torch로 구성된다.

This equipment is tack welding equipment.
Welding torch composition is twin tandem with 4 torches.





BLT (Built-up) FABRICATION LINE

STRAIGHTENING MACHINE

본 장비는 용접 후 변형된 T-BAR를 HYDRAULIC SYSTEM 에 의한 가압 ROLLER로 변형부위를 교정시켜 주는 장비이다.

This is straightening machine for T-bar after welding. Hydraulic pressing roller shall press and correct deformation of T-bar.



SUB- ASSEMBLY LINE

소부재 라인



PANEL & BLOCK
AUTOMATION LINE



BLT (BUILT-UP)
FABRICATION LINE



SUB-ASSEMBLY
LINE



ETC
EQUIPMENT



PIPE WELDING
EQUIPMENT



Sub-Assembly Line List

- Small parts Handling machine
- Longi. Auto Welding Machine
- Service Welding Machine
- Utility Welding Machine
- Small parts arrangement Machine
- Small parts Fit-up Machine
- Butt Welding Machine

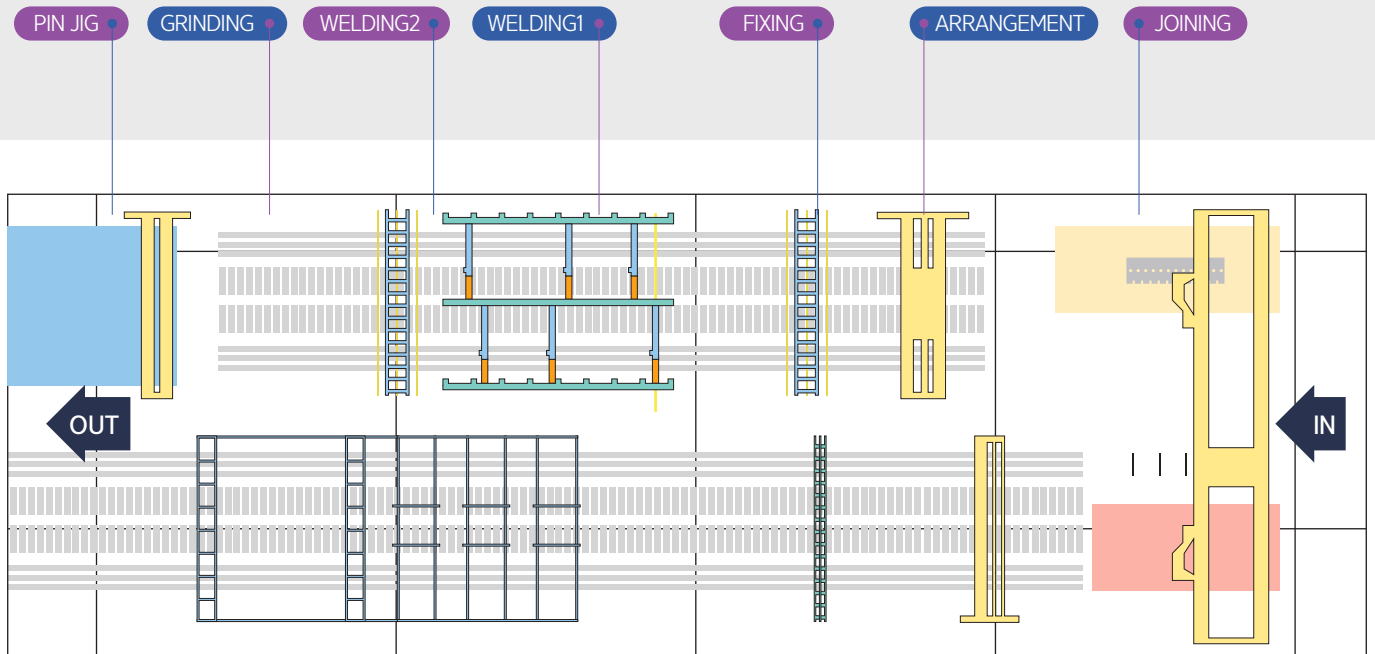


Sub-Assembly Line

본 설비는 작은 사이즈의 SUB-ASSEMBLY 부분을 제작하기 위한 것으로, 생산성과 생산량을 증대시키기 위해 ROLLER CONVEYOR LINE 및 다양한 자동화 장비로 구성된다. 이 설비에서 완료된 부분은 블록 제조 및 기타 큰 사이즈의 조립 영역으로 공급된다.

This system is composed with roller conveyor and some automated equipment for sub-assembly parts fabrication. completed parts shall deliver to block assembly shop for nest assembly work.

SUB-ASSEMBLY LINE



SMALL PARTS HANDLING MACHINE

Sub-Assembly Line Machine



LONGI. AUTO WELDING MACHINE



SERVICE WELDING MACHINE



UTILITY WELDING MACHINE



SMALL PARTS ARRANGEMENT MACHINE



SMALL PARTS FIT-UP MACHINE



BUTT WELDING MACHINE



ETC EQUIPMENT

기타장비



PANEL & BLOCK
AUTOMATION LINE



BLT (BUILT-UP)
FABRICATION LINE



SUB-ASSEMBLY
LINE



ETC
EQUIPMENT



PIPE WELDING
EQUIPMENT





Etc equipment

RUDDER TRUCK

선박의 선미쪽 Rudder, Propeller 및 Shaft 조립공정에 사용하는 장비이다.

This equipment is used for assembling the rudder, propeller and shaft at the stern area.



Etc equipment

SKID SYSTEM

제작된 선박 및 MEGA BLOCK을 FLOATING DOCK로 이송하는 장비이다.

It is a device that transports manufactured ships and mega blocks to floating docks.





Etc equipment

TRANSPORT CAR

본 설비는 블록 제작라인에서 용접된 블록을 최종 반출하기 위한 장비로서 HYD' Cylinder를 이용하여 블록을 들어올려 필요한 위치까지 이동하기 위한 장비이다.

This equipment is used to take out the welded blocks from the block production line. It lifts up the blocks using the HYD' Cylinder and then move them to the required position.



PIPE WELDING EQUIPMENT

파이프 용접 설비



PANEL & BLOCK
AUTOMATION LINE



BLT (BUILT-UP)
FABRICATION LINE



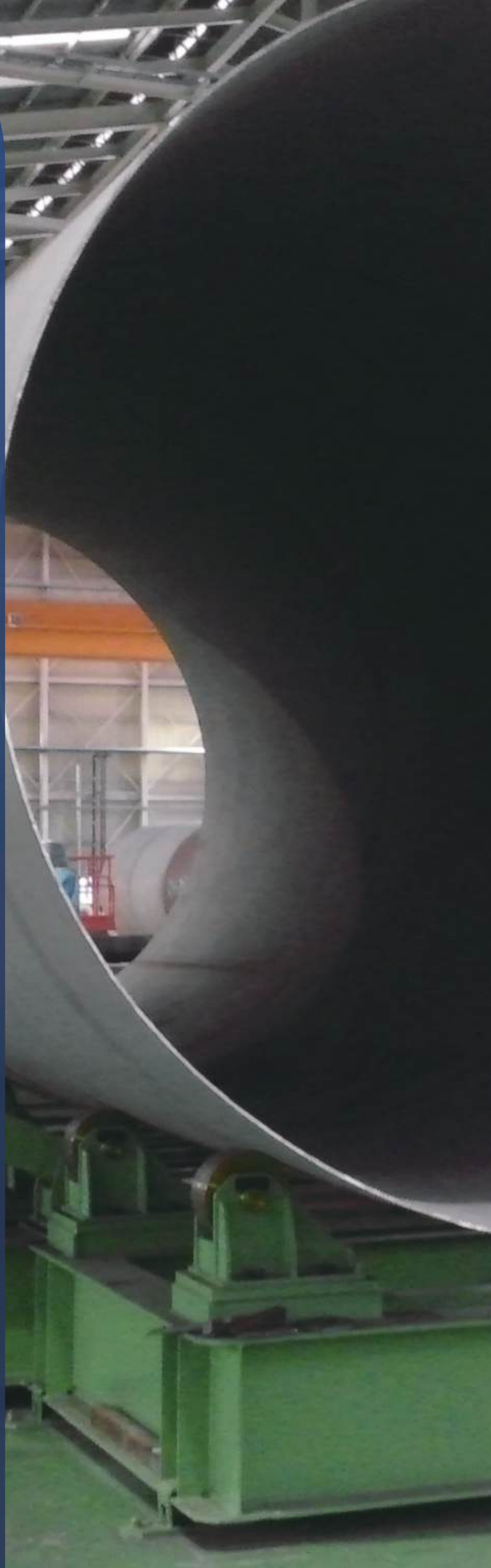
SUB-ASSEMBLY
LINE



ETC
EQUIPMENT



PIPE WELDING
EQUIPMENT



Pipe welding equipment

PIPE 용접설비

본 설비는 다양한 종류의 tank shell 및 pipe의 longi/girth 라인을 자동으로 용접하고 조립하기 위한 장비이다.

This equipment is automatic Welding and Assembly Machine for Longi / Girth lines of various kinds of tank shell and large caliber pipe in Pipe Shop.

1 PIPE LINE FLOW



2 판계 용접 PLATE JOIN WELDING MACHINE



Pipe welding equipment

SAW IN-SIDE WELDING SYSTEM

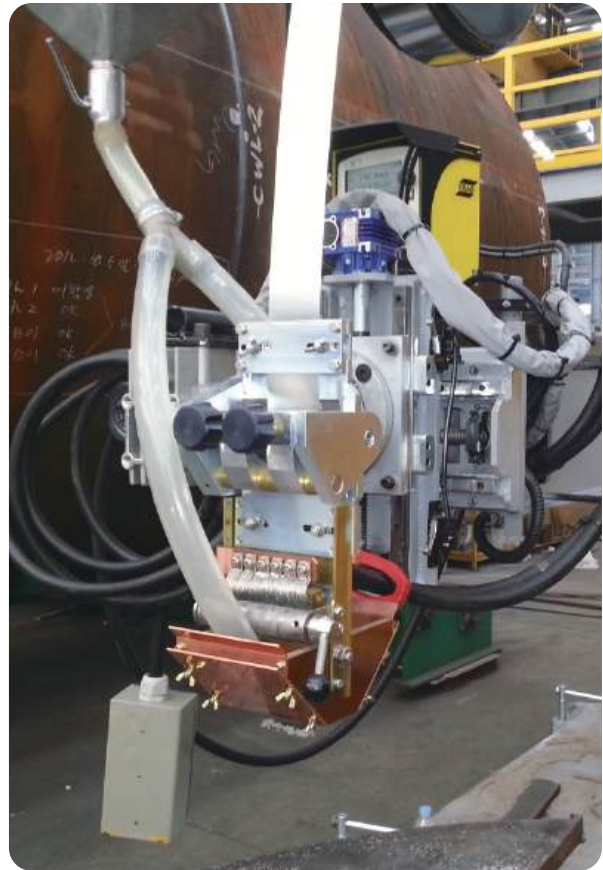




Pipe welding equipment

SAW OUT-SIDE WELDING SYSTEM





Pipe welding equipment

WELDING MANIPULATOR SYSTEM

Pipe welding equipment

용접 주변 설비

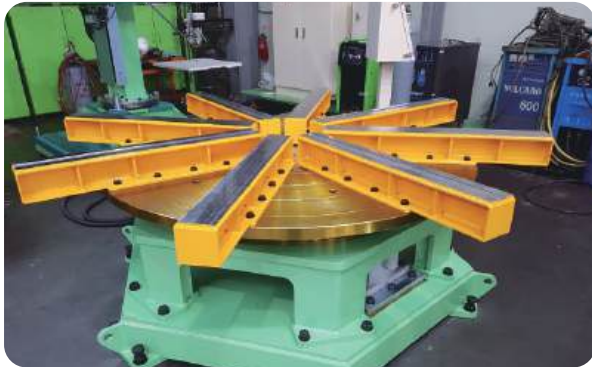
1 복관 취부 장비
CIRCLE SEAM WELDING MACHINE



2 TURNING ROLLER & WELDING CAR SYSTEM



3 WELDING TURN TABLE



4 KICKER & FEEDING ROLLER



5 PIPE "X-RAY" INSPECTION SYSTEM

